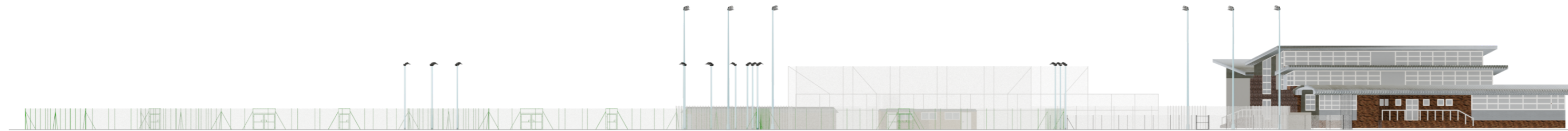
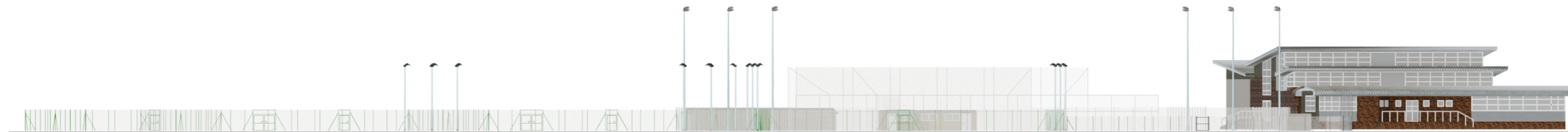


Brooklands Sports Club - Uprating Floodlights on Hockey Pitch

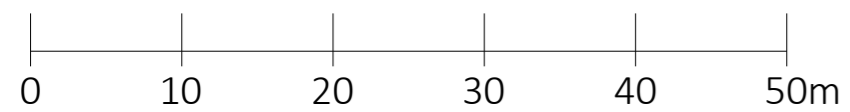
Existing Elevation



Proposed Elevation
Uprated Lights



(No elevation change from the proposal)



Scale 1:500 @ A2

Produced by BLA Creative Ltd
www.blacreative.co.uk

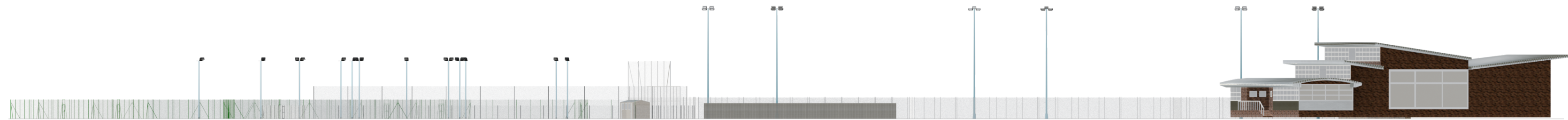
Dwg Reference: BSC-HkyUp-04-r2
Date Produced: 10 Aug 2025

Sheet: 1 of 4

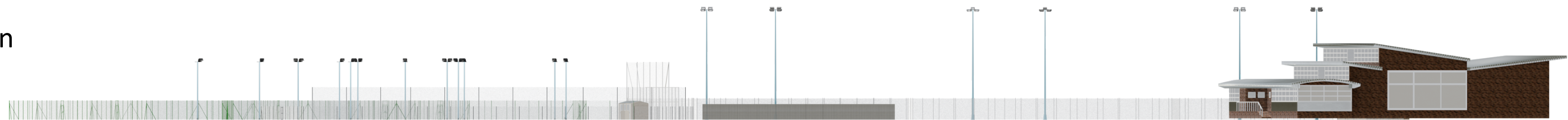
Dwg No 4 - Existing & Proposed Elevations
View looking West

Brooklands Sports Club - Uprating Floodlights on Hockey Pitch

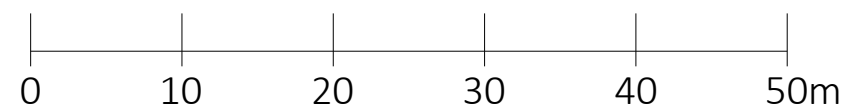
Existing Elevation



Proposed Elevation
Upgraded Lights



(No elevation change from the proposal)



Scale 1:500 @ A2

Produced by BLA Creative Ltd
www.blacreative.co.uk

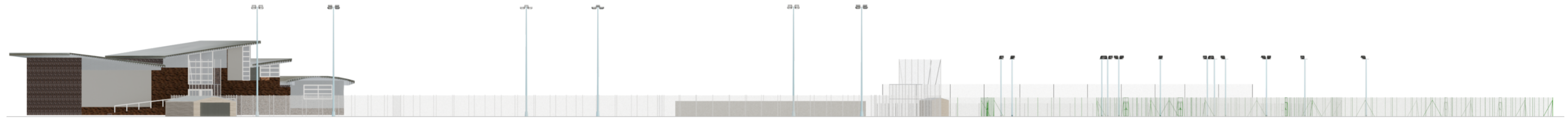
Dwg Reference: BSC-HkyUp-04-r2
Date Produced: 10 Aug 2025

Sheet: 2 of 4

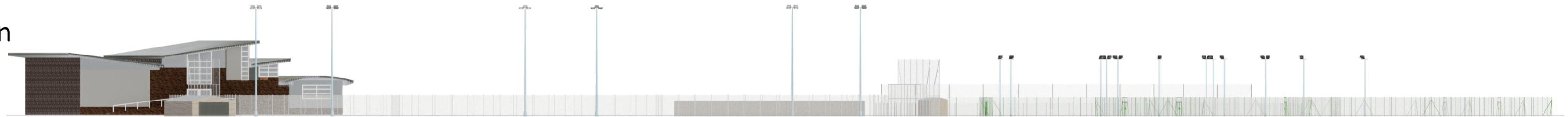
Dwg No 4 - Existing & Proposed Elevations
View looking South

Brooklands Sports Club - Uprating Floodlights on Hockey Pitch

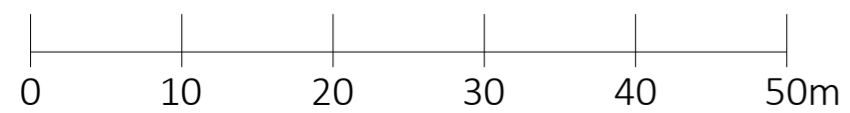
Existing Elevation



Proposed Elevation
Upgraded Lights



(No elevation change from the proposal)



Scale 1:500 @ A2

Produced by BLA Creative Ltd
www.blacreative.co.uk

Dwg Reference: BSC-HkyUp-04-r2
Date Produced: 10 Aug 2025

Sheet: 3 of 4

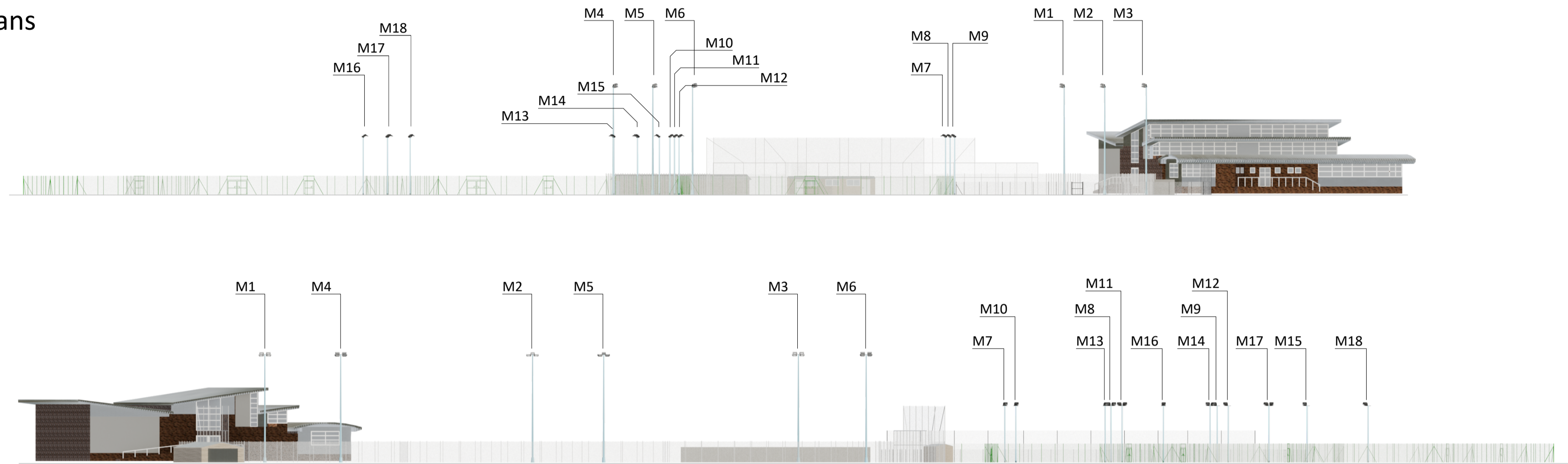
Dwg No 4 - Existing & Proposed Elevations
View looking North

Brooklands Sports Club - Uprating Floodlights on Hockey Pitch

Mast Key

M1 to M18 Existing Masts
Key is with reference to Site Plans

Not to scale

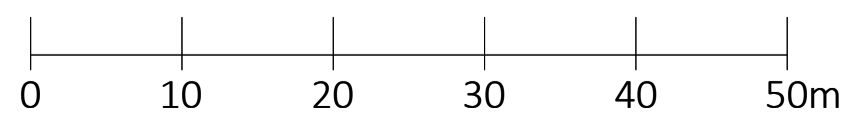
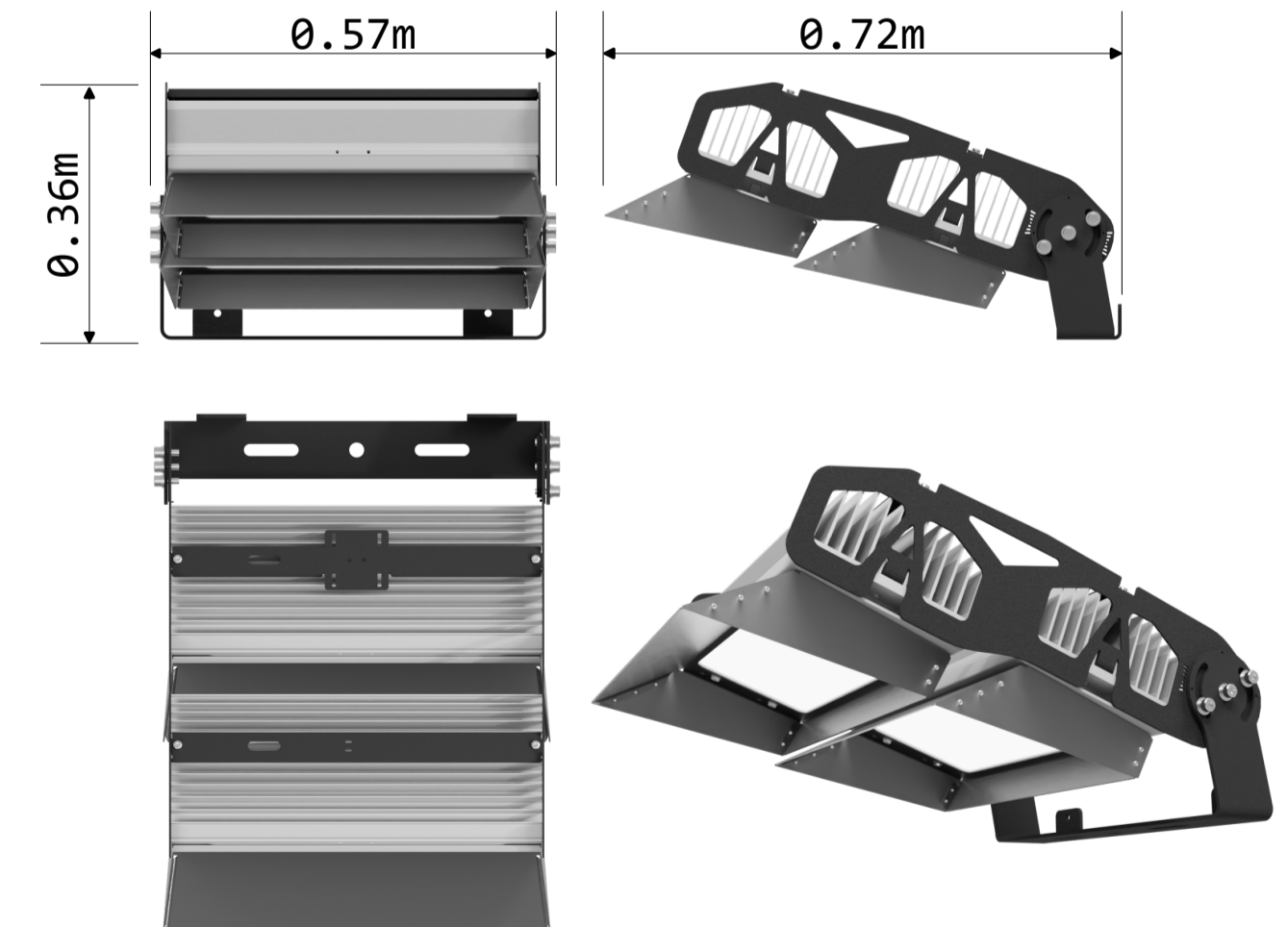


Mast / Lamp Lux Levels

Location	Mast	Lamp	Current Average Lux	Proposed Average Lux
Hockey	M1, M3, M4, M6	4x MR16	300 lux	500 lux
Hockey	M2, M5	3x MR16	300 lux	500 lux
Tennis	M7, M10, M13, M16	1x MR07	400 lux	No change
Tennis	M8, M11, M14, M17	2x MR07	400 lux	No change
Tennis	M9, M12, M15, M18	1x MR07	400 lux	No change

MR16 luminaire - Reference only

Shown at 15 degree elevation. Not to scale.



Scale 1:500 @ A2

Produced by BLA Creative Ltd
www.blacreative.co.uk

Dwg Reference: BSC-HkyUp-04-r2
Date Produced: 10 Aug 2025

Sheet: 4 of 4

Dwg No 4 - Existing & Proposed Elevations
Ancillary Information