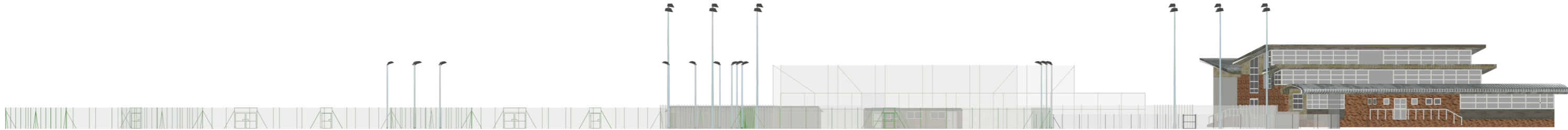
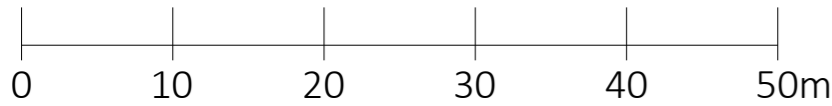
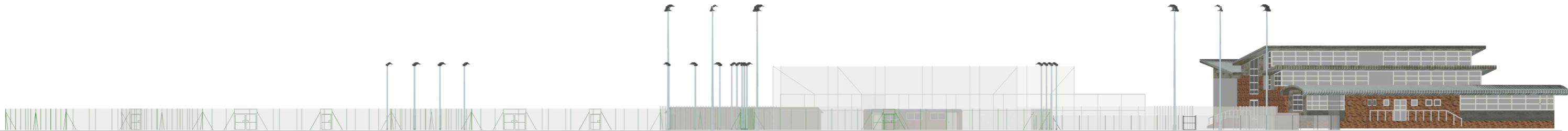


Brooklands Sports Club - Upgrading Floodlights on Hockey Pitch and Tennis Courts

Existing Elevation



Proposed Elevation
Upgraded Lights
and
Additional Masts



Scale 1:500 @ A2

Produced by BLA Creative Ltd
www.blacreative.co.uk

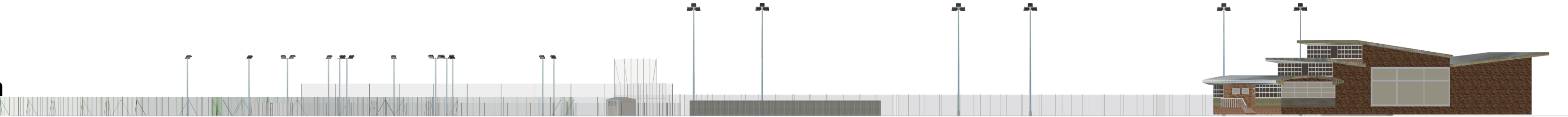
Dwg Reference: BSC-FdUp-05-r5
Date Produced: 28 Oct 2024

Sheet: 1 of 4

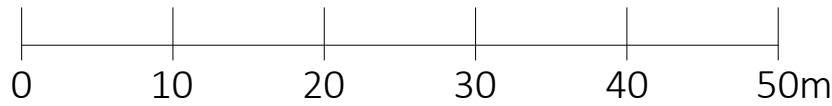
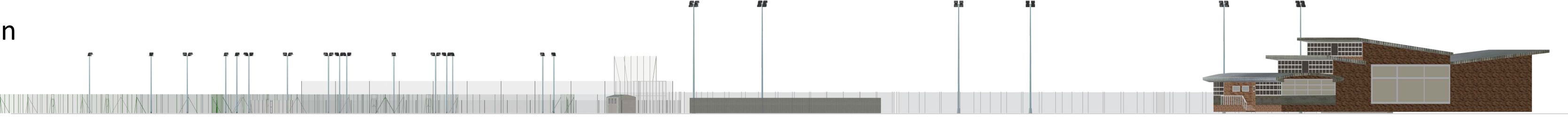
Dwg No 4 - Existing & Proposed Elevations
View looking West

Brooklands Sports Club - Upgrading Floodlights on Hockey Pitch and Tennis Courts

Existing Elevation



Proposed Elevation
Upgraded Lights
and
Additional Masts



Scale 1:500 @ A2

Produced by BLA Creative Ltd
www.blacreative.co.uk

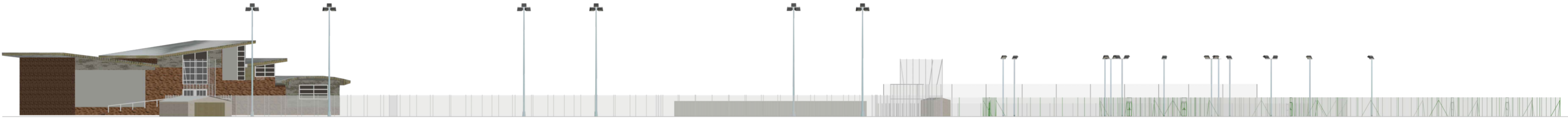
Dwg Reference: BSC-FdUp-05-r5
Date Produced: 28 Oct 2024

Sheet: 2 of 4

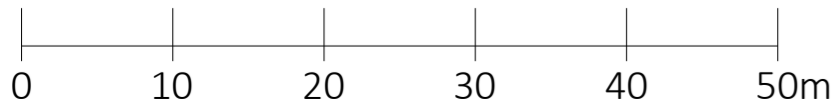
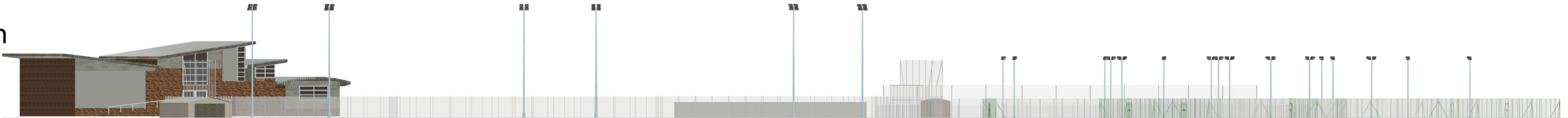
Dwg No 4 - Existing & Proposed Elevations
View looking South

Brooklands Sports Club - Upgrading Floodlights on Hockey Pitch and Tennis Courts

Existing Elevation



Proposed Elevation
Upgraded Lights
and
Additional Masts



Scale 1:500 @ A2

Produced by BLA Creative Ltd
www.blacreative.co.uk

Dwg Reference: BSC-FdUp-05-r5
Date Produced: 28 Oct 2024

Sheet: 3 of 4

Dwg No 4 - Existing & Proposed Elevations
View looking North

Brooklands Sports Club - Upgrading Floodlights on Hockey Pitch and Tennis Courts

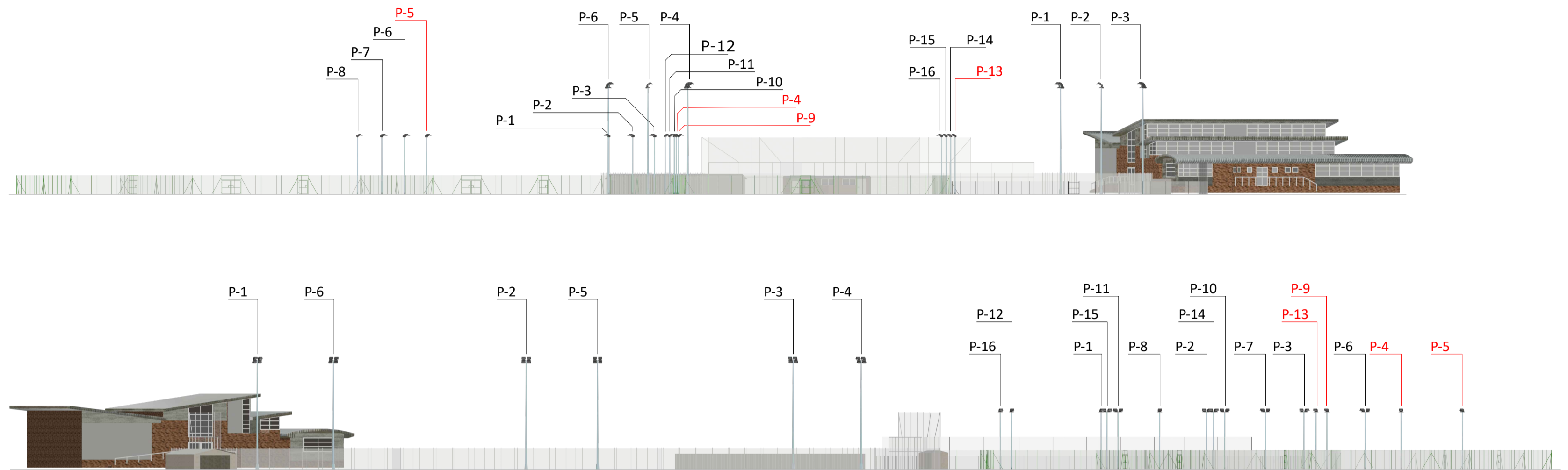
Mast Key

Black IDs Existing Masts

Red IDs Proposed New Masts

Mast identifier is with reference to the Site Plans Dwg 1, 2 & 3

Not to scale



Mast / Lamp Configurations

Lamps are configured: single, double or quad depending on mast location.

Location	Mast	Current Lamp	Proposed Lamp
Hockey	P-1 to P-6	4x S1500 at 300 lux	4x S1500 at 350 lux and 500 lux
Tennis	P-1, P-8, P-12, P-16	1x MR07 at 400 lux	1x MR07 at 500 lux
Tennis	P-2, P-7, P-11, P-15	2x MR07 at 400 lux	2x MR07 at 500 lux
Tennis	P-3, P-6, P-10, P-14	1x MR07 at 400 lux	2x MR07 at 500 lux
Tennis	P-4, P-5, P-9, P-13	n/a	1x MR07 at 500 lux